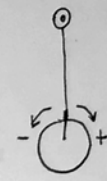
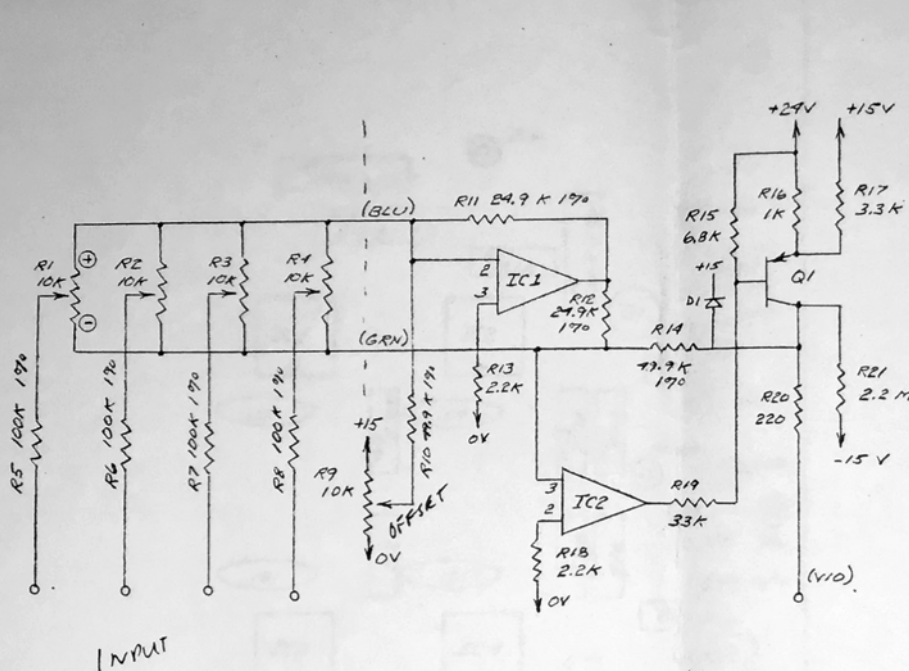


DATE	SYM	REVISION RECORD	AUTH.	DR.	CK.
4/71		CHANGES R10, 14, 21			
		ADD D1			



X2 IC 3,4; Q2; R22-42

IC 1-4  $\mu$ A741

Q1,2 2N4298

D1 1N457

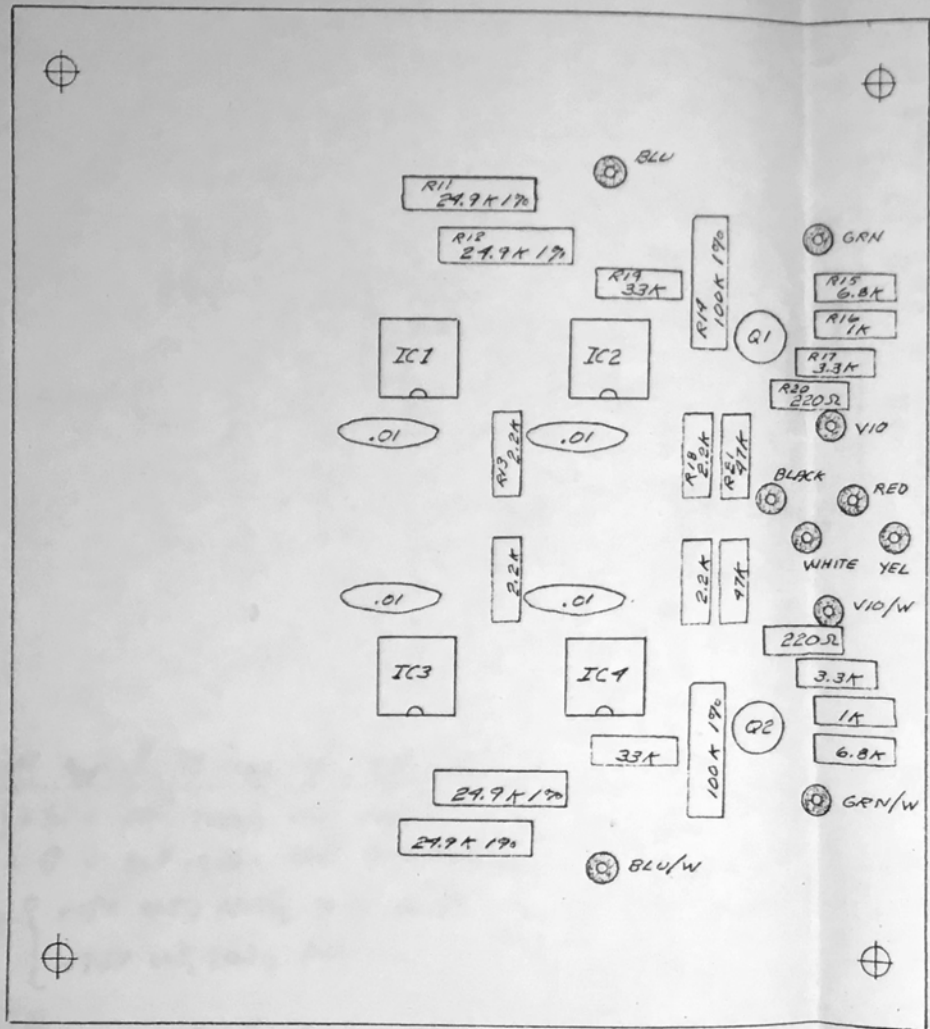
+15V Applied to any one input gives:

~~Offset~~ Offset = 0  $\left\{ \begin{array}{l} +7.5V \text{ out, scaling knob full +} \\ 0V \text{ out, scaling knob 0 to full -} \end{array} \right.$   
 Offset = +15  $\left\{ \begin{array}{l} +15V \text{ out, scaling 0 to full +} \\ +7.5V \text{ out, scaling full -} \end{array} \right.$

Output clamped to 0 to +15V range

TOLERANCES (EXCEPT AS NOTED)	BUCHLA ASSOCIATES		
DECIMAL	SCALE	DRAWN BY B/H	
±	SERIES 200	APPROVED BY	
FRACTIONAL	TITLE		
±	SCHEMATIC - C.V. ADDER		
ANGULAR	DATE	DRAWING NUMBER	
±	9/27/70	B2560	

DATE	SYM	REVISION RECORD	AUTH.	DR.	CK.



BLACK  
 WHITE  
 RED  
 YEL  
 GRN  
 BLU  
 VIO  
 GRN/W  
 BLU/W  
 VIO/W

IC1-4 4A741  
 Q1,2 2N4248

TOLERANCES (EXCEPT AS NOTED)	BUCHLA ASSOCIATES		
DECIMAL ±	SERIES 200	SCALE 2X	DRAWN BY BH
FRACTIONAL ±	TITLE LAYOUT MOD 256 C.V. ADDER		
ANGULAR ±	DATE 9/21/70	DRAWING NUMBER 82561	
			APPROVED BY